

Changing the Rules: Competing in a Changing Economy



Sweeping Away the Old Rules

- Globalization
- Technology
- Demographics



Employment Changes 1990 -2010

	Manufacturing			Professional and Business Services			Education and Health Services		
	1990	2010	% Change	1990	2010	% Change	1990	2010	% Change
U.S. Metro									
RESEARCH TRI.	76.9	62.1	-19%	62.4	121.4	95%	51.6	118.5	130%
SAN DIEGO	123.4	90.7	-26%	124.1	198.8	60%	84.1	147.4	75%
PHILADELPHIA	246.9	130.1	-47%	213.6	286	34%	278.3	434.5	56%
BOSTON	205.8	92	-55%	226.1	296.1	31%	267.2	378.5	42%
SEATTLE	222.2	169.1	-24%	138.8	224.7	62%	114.8	213.7	86%
DENVER	84.8	59	-30%	129.5	202.6	56%	72	143.9	100%
BALTIMORE	128.5	59.5	-54%	123.1	191.4	55%	145.8	244.6	68%
SAN FRAN	170.5	113.4	-33%	275.7	339.8	23%	173.7	235.5	36%
PITTSBURGH	130.6	85.5	-35%	126.6	155.6	23%	160.2	239.8	50%
USA	17695	11743	-34%	10848	16991	57%	10984	19838	81%

Building a 21st Century City

- Well Managed
- Vibrant
- Educated
- “Raw Materials”
- Entrepreneurial
 - Public-Private Partnerships
- Capital availability





Transforming Pittsburgh



“Indeed, Pittsburgh's art scene, job prospects, safety and affordability make it the most livable city in the country, according to measures studied. The city has rebounded from its manufacturing past. Disused steel mills have been repurposed into multimedia art centers, and amid a struggling national economy...”, *“America's Most Livable Cities”*, 4/29/2010, *Forbes Magazine*

Transforming Pittsburgh



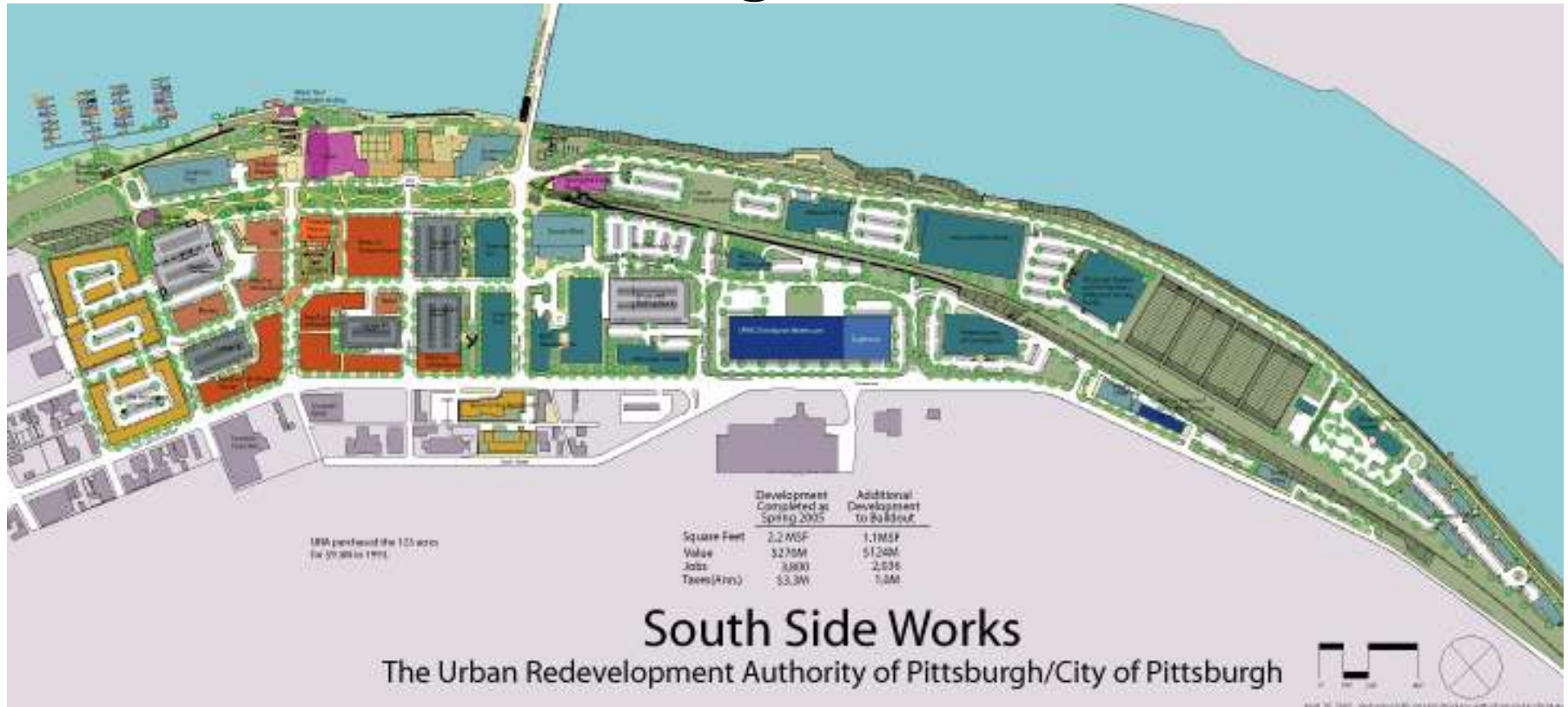
The *South Side Works*
has expanded an
historic neighborhood
and created a regional
destination



South Side Works is a walkable mixed-use *Live-Work-Play* Environment



The mixed-use site masterplan has reconnected the neighborhood to the river



Development Cost: **\$450 Million**
TIF Proceeds: **\$21 Million**
Other Public: **\$128 Million**
Private Investment: **\$301 Million**

Public investment funded site remediation, roads, parking garages, bridges, trails, and parks.

Transforming Pittsburgh



The *Summerset* development has transformed a former slag dump into a premier City neighborhood



Summerset has become Pittsburgh's showcase market rate residential community



1. Leadership
2. Strategy
3. Institutional Capacity



4. Financing
Infrastructure

5. Education

6. Design
Excellence



Where Will the New Roads Lead...

